



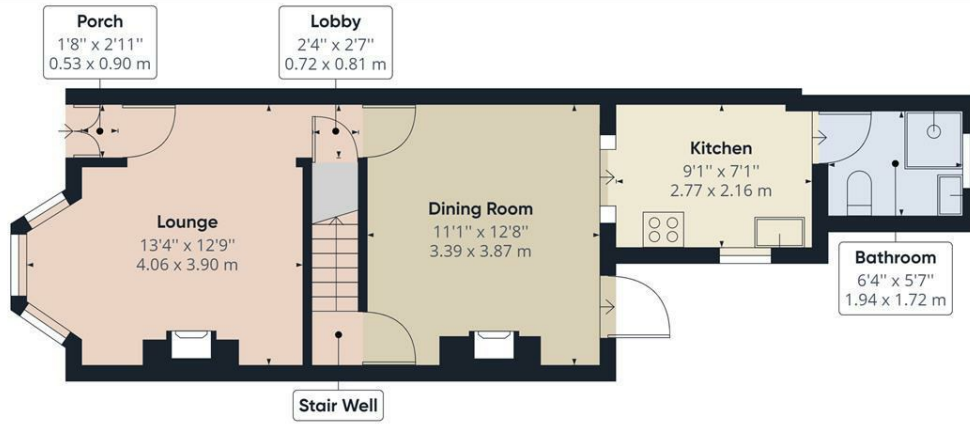
## 7 Prospect Avenue, Frindsbury, Kent, ME2 3BZ

CALL NOW TO BOOK YOUR VIEWING. CHAIN FREE. GUIDE PRICE £275,000 - £300,000  
3 SEPARATE BEDROOMS\*\*2 RECEPTIONS ROOMS\*\*2ND W.C.\*\*NO CHAIN\*\*REAR GARDEN\*\*FRONT COURT YARD

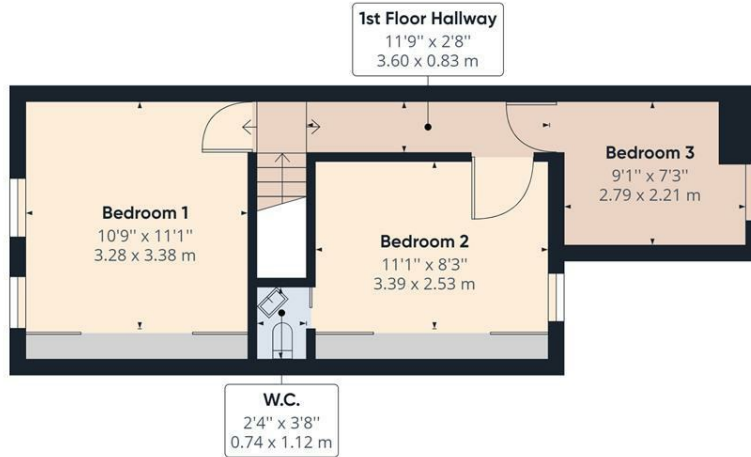
This three bedroom mid terrace house built in the 1900's with bags of character has just become available to the sales market and we recommend you book your viewing now. This fantastic property has been well loved over the years, and could be easily moved in to, and updated as you go. The lounge situated to the front of the property is perfectly set of with the large bay window. The dining room is separate to the lounge, leads to the well equipped kitchen and offers access to the rear garden. just off of the kitchen you'll find the good sized shower room with corner set double shower. To the first floor there are three separate bedrooms with a handy W.C. to the 2nd. Benefits to this property include gas central heating, double glazed windows, a pretty rear garden, a front court yard garden and NO CHAIN. This property boasts original features including internal doors and the fireplace in the 2nd bedrooms. Frindsbury is a sought after part of Strood and Prospect Avenue is within walking distance to the town centre train station and local schools. call us now to book your internal viewing!  
Council Tax Band B

- NO CHAIN
- 2 RECEPTION ROOMS
- 3 SEPARATE BEDROOMS
- 2ND W.C.
- FITTED KITCHEN
- GUIDE PRICE £275K - £300K
- GAS CENTRAL HEATING
- DOUBLE-GLAZED WINDOWS
- VIEWING ADVISED

**£275,000**



Ground Floor Building 1



Floor 1 Building 1

Approximate total area<sup>(1)</sup>  
775.65 ft<sup>2</sup>  
72.06 m<sup>2</sup>

(1) Excluding balconies and terraces

While every attempt has been made to ensure accuracy, all measurements are approximate, not to scale. This floor plan is for illustrative purposes only.

GIRAFFE360

